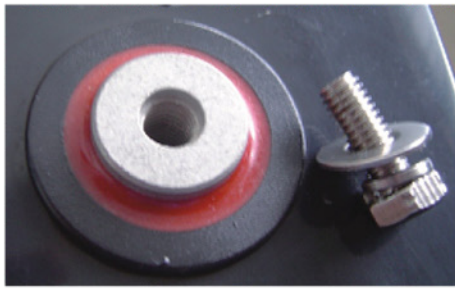
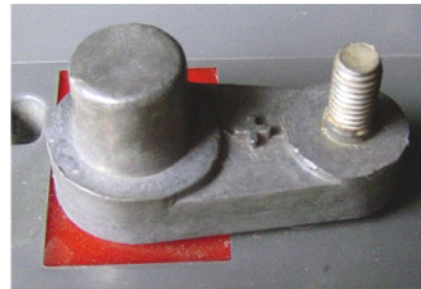


## Terminal configurations



**M5, M6, M8 or M10**  
(Button Terminal)



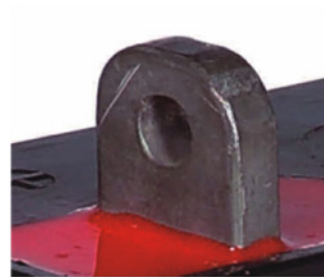
**APW**  
(Marine Dual Terminal)



**DT**  
(AP and Stud Terminal)



**M6M, M8M, M10M**  
(Male Stud Terminal)



**L**  
("L" Terminal)



**AP**  
(Automotive Post)



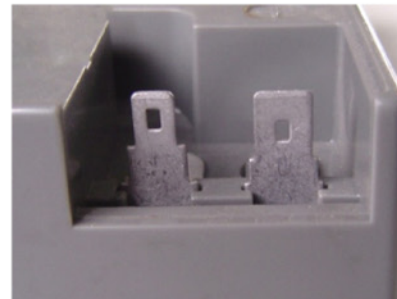
**F2 or F1**  
(Fasten Tab 250&187)



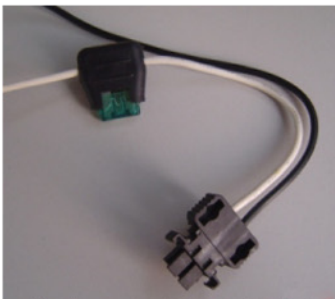
**RB**



**TS**



**PL**



**TH**



**CQ**

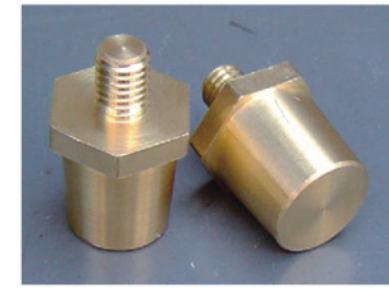


**C01**



**S01**

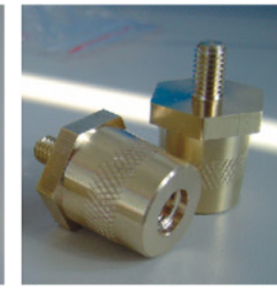
## Battery accessories



**TP01 (TP02)**  
M8(M6)-AP Terminal



**TP04 (TP05)**  
M8(M6)-A01 Terminal



**TP08 (TP07)**  
M8(M6)-A01 Terminal,  
With knurling



**TP26**  
M6-A01 Terminal



**TP28 (TP29)**  
M8 (M6) - A01 Terminal



**FR45 (FR46)**  
Side Receptacles for  
HC65 (HC75)



**AP400**  
Terminal Cover



**LP100**  
Terminal Cover



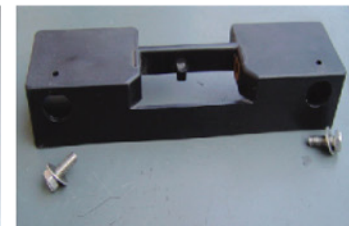
**VP100**  
Terminal Cover



**Adaptor**  
for DC26-12B



**JSTE Cables**  
for DC20-12&DC17-12



**Adaptor**  
for DC35-12B



**Adaptor**  
for DC24-12



**Metal Jacket**



**Battery Bag**  
for DC35, DC17,  
DC20, DC26



**Cross Belt**  
for DC35,  
DC17, DC20